

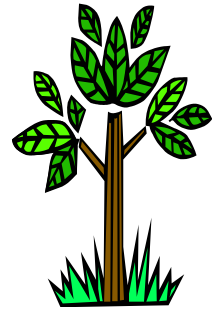
NAME(S) \_\_\_\_\_ DUE DATE:

IF YOUR PROJECT IS LATE YOU WILL RECEIVE A ZERO (0).

## PHOTOSYNTHESIS & CELLULAR RESPIRATION PROJECT

### Directions:

- Design a project that will show information about photosynthesis and cellular respiration and the *connections between the two*.
- You must explain what these processes are. Why they are important. Where they happen in the cells. What each process produces. How respiration and photosynthesis are important to one another, and anything else important to these processes.



**You must submit a piece of writing for this assignment.**

To enhance your project you can show the relationship between the two in the following ways (there will be a separate rubric for the additional work pieces):

**Song** – at least 2 minutes long, any genre of music, lyrics typed, and song performed (or recorded and sent to Mr. Rowitt via email)

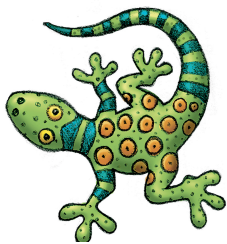
**Poster** - must include all key terms, visually appealing, colorful, and creative

**Comic Strip** – tell the story of the stages and connections between photosynthesis and respiration.

**Poem** – must include all the necessary information and make the connection between photosynthesis and respiration.

**If you are creating your project on the computer you must save it with a file name that includes your name and the title of your project!!**

Your Project Must Contain the Following Information:



**Terms to Include in the Project:** (these terms must be in the project)  
Carbon Dioxide ( $6\text{CO}_2$ ), Oxygen ( $6\text{O}_2$ ), Glucose or Sugar ( $\text{C}_6\text{H}_{12}\text{O}_6$ ),  
Sun/Sunlight/Light, Water ( $6\text{H}_2\text{O}$ )

**Areas in your project should represent the following:** (these terms need to be in the project, but do not need to be called this but should be represented)  
Chloroplast, Mitochondria, Cytoplasm, Autotroph, Heterotroph, chlorophyll,  
Stomata, sunlight, ATP (energy molecule), gas exchange

The following page shows the rubric for this assignment.

**DUE DATE:**

**IF YOUR PROJECT IS LATE YOU WILL RECEIVE A ZERO (0)**

Your grade for the written portion will be based on the following criteria:

<b>Category</b>	<b>Points Earned</b>
<b>Terms/Areas to be Included (20 Points)</b> - contains all the needed information terms/areas 20-----15-----10-----5-----1-----0	
<b>Presentation (20 Points)</b> - must be neat - organized in a way people can understand and follow 15 Yes 0 No 5 4 3 2 1 0	
<b>Accuracy (20 Points)</b> - processes are represented accurately 20----15----10----5----1----0	
<b>Total Points Earned/Total Points Possible</b>	<b>/ 60</b>

The following rubric will be used for the additional work pieces you submit:

<b>Category</b>	<b>Points Earned</b>
<b>Title (5 Points)</b> clearly visible 5 Yes 0 No	
<b>Key Terms (30 Points)</b> - Contains all needed information 30----20----10----0	
<b>Presentation (5 Points)</b> - clearly shows the needed information 5 Yes 0 No	
<b>Presentation of additional materials (15 Points)</b> - must be neat 15 Yes 0 No	
<b>Creativity (30 Points)</b> - project displays a creative way to show the information and connections between the two processes 30----20----10----0	
<b>Total Points Earned/Total Points Possible</b>	<b>/ 85</b>